

Mercedes-Benz Classic

# Zertifikat

Nr. A01370

ausgefertigt für

**G. Wayne Dow**

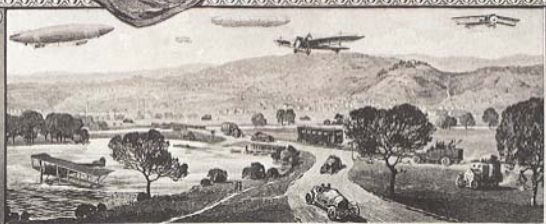
Model	280 SL
Vehicle identification number	113 044 12 021 877
Engine number	130 983 12 014 800
Body number	113 044 12 06 424
Purchase order number	0 704 6499
Gearbox number	009 603
Master key	HF <span style="background-color: red; color: black;">XXXXXXXXXX</span>
Destination of delivery	Mercedes-Benz sales distribution agency in the USA

Date of delivery	06.11.1970
Paintwork	DB code 396
Interior appointments	DB code 145
Options	DB code 401 416 426 440 461 491 503 515 524 595 600 641 669 249 743

*This certificate is not  
a proof of ownership*  
Stuttgart, 12.05.2003

*Max Herrle von Pein*  
Max Herrle von Pein

*Dr. Harry Namann*  
Dr. Harry Namann





Mercedes-Benz

## Specifications

of the Mercedes-Benz 280 SL, vehicle identification number 113 044 12 021 877,  
at the time of delivery

Paintwork DB code 396 medium blue metallic  
Interior appointments DB code 145 vellum-coloured MB-Tex 8014

### Options

401 Single seats  
416 Hardtop  
426 Mercedes-Benz power steering, and  
automatic transmission with floor shift  
440 Bumpers with guards, front and rear  
461 Instruments, in English  
491 U.S. version  
503 Outside rearview mirror, on the left  
515 Becker radio set "Europe" MU (USA)  
524 Paintcoat preservation  
595 Heat-absorbing glass, windshield and side window panes  
600 Garnish mouldings on hardtop  
641 White-wall tires  
669 Mode of packing VE III  
249 Rear window electrically heated and heat-absorbing glass  
(compound glass)  
743 Folding top fabric 8021 vellum-coloured